

GENI Terminology



Sponsored by the National Science Foundation



slice

project

experimenter

resource

aggregate

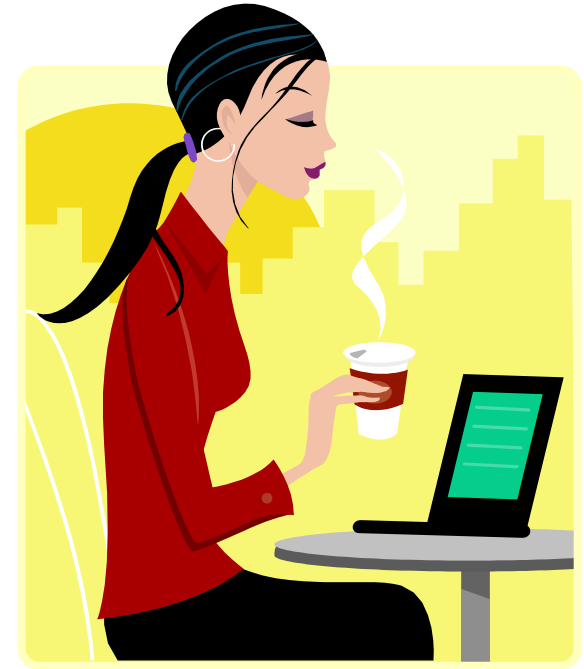


An **experimenter**

is a researcher who uses GENI resources

Different types of experimenters have different roles and permissions:

- Advisor vs Grad Student
- Teacher vs TA vs Student



Experimenter



Creating an Account



GENI Portal is at:

<https://portal.geni.net>

Instructions for creating an account are:

<http://groups.geni.net/geni/wiki/SignMeUp>



GENI User Authentication

The GENI Portal leverages InCommon for single sign-on authentication

InCommon[®]

Experimenters from 304 educational and research institutions have InCommon accounts

For many experimenters:

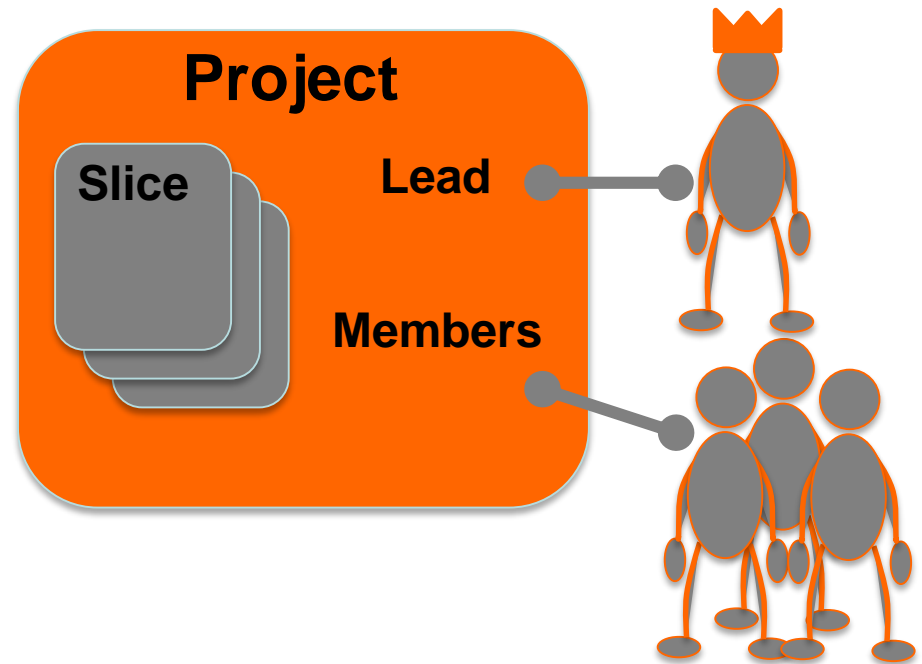
- no new passwords
- familiar login screens



GENI Project Office runs a federated IdP to provide accounts for non-federated organizations.



Projects organize research in GENI



Projects contain both **people** and their **experiments**

A project is led by a single responsible individual:
the **project lead**



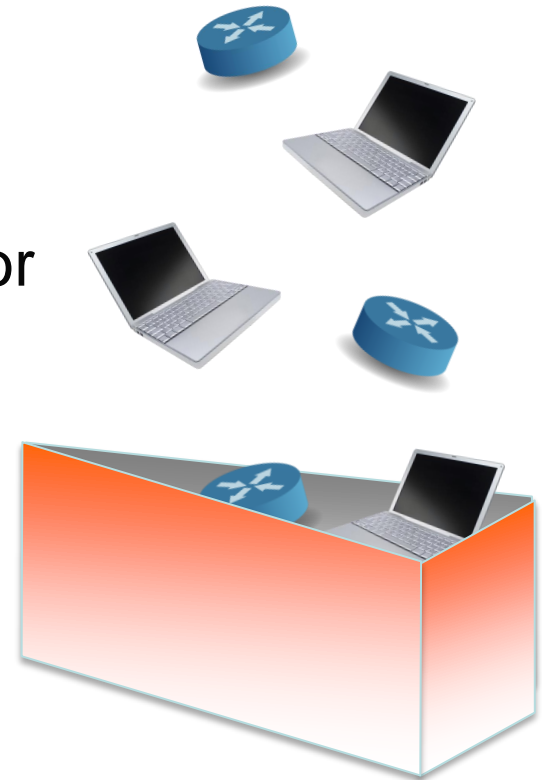
A **slice** is a *container* of resources used in an *experiment*.

A slice can contain resources from one or more aggregates

A slice is in a single project

A slice has an ***expiration***

Slice names are ***public, reusable*** and ***unique*** (*within a project*)



A resource

is a piece of infrastructure

A resource can be real or virtual.

Resource specifications (aka. **RSpecs**) are used to describe and request resources.

Examples:

- Compute: computer vs virtual machine (VM)
- Wireline Network: VLAN or OpenFlow
- Wireless: WiMAX



An **aggregate** manages a set of reservable **resources**

Aggregates include:

GENI racks

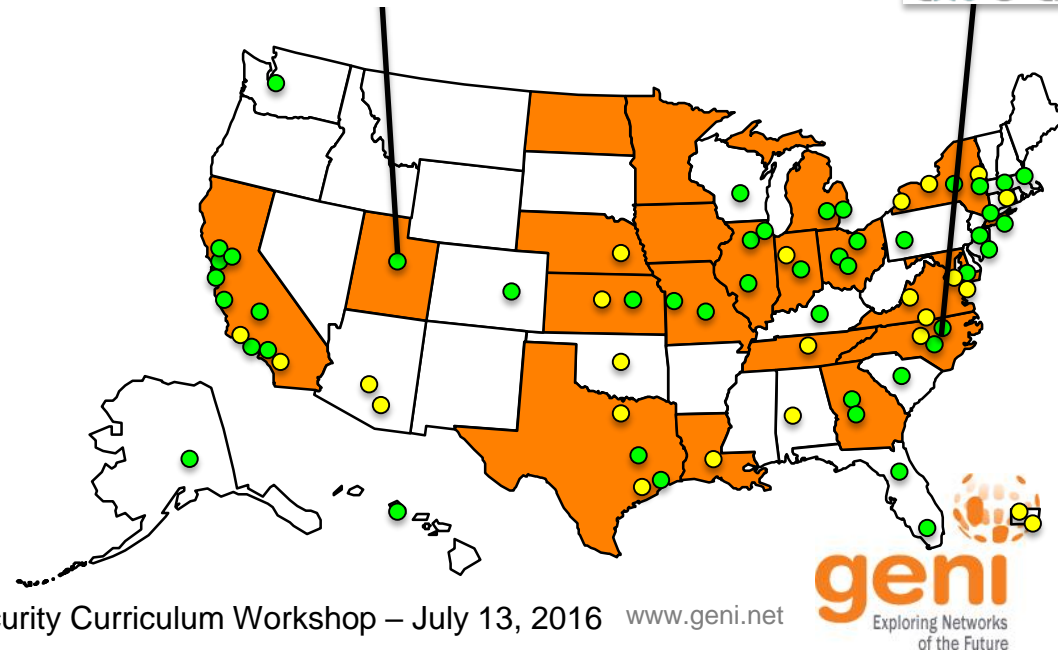
OpenFlow

WiMAX

InstaGENI Rack



ExoGENI Rack



project

Lead:



**Experimenter
(aka Professor)**

Member:



**Experimenter
(aka Student)**

slice

aggregate



Demo



Sponsored by the National Science Foundation



geni
Exploring Networks
of the Future